

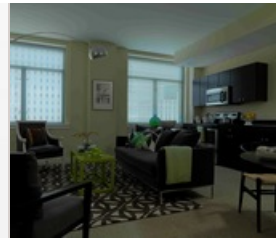
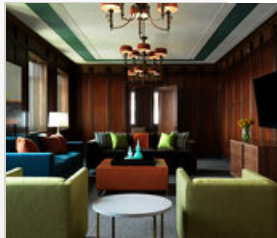
PARK PACIFIC

1226 Olive Street
St. Louis, MO 63103 | 1-888-249-5719



Elevate your lifestyle at ParkPacific, downtown St. Louis' premier luxury apartment address. From the refurbished brick and masonry on the exquisite Art Deco exterior of what was once the headquarters of the Missouri Pacific Railroad to the unabashed luxury of the 230 brand new apartment residences inside, every detail has been thoughtfully planned and carefully executed for the comfort and enjoyment of ParkPacific's residents. Coming soon - the restaurant in ParkPacific should be open this summer!

Brand NEW studios, 1 bedrooms, 2 bedrooms and Penthouses all with panoramic views of downtown St. Louis. Our building was the latest thing in 1926 and it's the latest thing now -- offering unparalleled amenities such as the service of a 24 hour doorman, Wii® room, rooftop wading pool and grilling area and a 2,800 square foot fitness center. Live ParkPacific Today. The one choice for downtown living.



COMMUNITY/APARTMENT AMENITIES

- Air Conditioning
- Business Center
- Covered Parking
- Dishwasher
- Fitness Center
- Garage Parking
- High-speed Internet access
- Large closets/storage
- Outdoor Pool
- Patio or Balcony
- Washer/Dryer in-suite

LEARN MORE ON OUR WEBSITE

<https://www.vipcorporatehousing.com/properties/park-pacific.html>

www.vipcorporatehousing.com