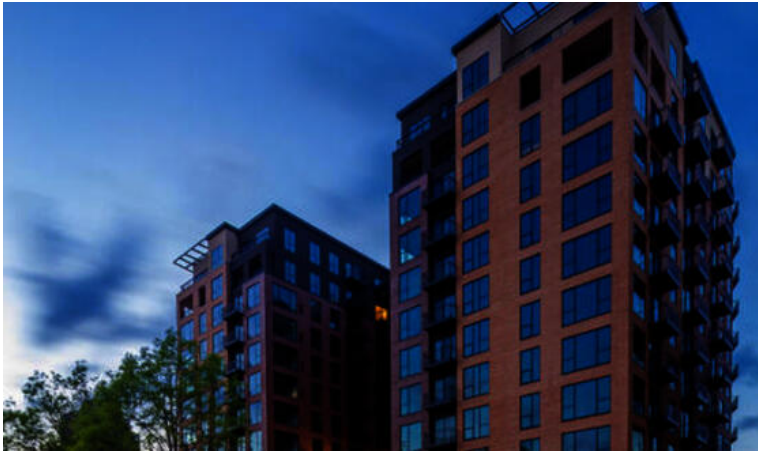
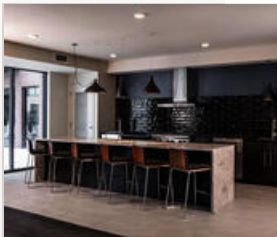
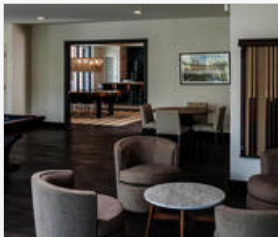


CITIZEN PARK

4643 Lindell Blvd
St. Louis, MO 63108 | 1-888-249-5719



Citizen Park is located at the heart of the vibrant Central West End neighborhood. The CWE is home to the beautiful Cathedral Basilica and the Barnes Jewish Medical Center as well as the growing innovation hub and technology district in the Cortex Innovation Community. The combination of beautiful streetscapes, rich nightlife and total accessibility has helped make the Central West End one of America's 10 Greatest Neighborhoods. Unmatched Central West End luxuries: Private balconies with spectacular views Large closets that fit every outfit for every season Floor to ceiling windows with custom roller shades Central AC/Heat individual to each apartment Smart Wi-Fi thermostats with remote access Unique finishes to bring out your inner interior decorator: Contemporary vinyl plank flooring Multiple interior color schemes Modern single panel doors with lever handle Oversized bathrooms to start your day comfortably: Floor to ceiling bath/shower tile Curved shower rods Modern open kitchens that necessitate dinner parties: Whirlpool stainless steel appliances Bottom drawer freezers Granite countertops with tile backsplash Deep single bowl sink with garbage disposal High arch spray faucets 42" upper cabinets throughout Penthouse upgrades: 10' Ceilings* Wrap around private patios in select units* Custom closet systems in master walk-ins* Gas fireplaces in select units* Kitchen Whirlpool French door refrigerator* Whirlpool Natural Gas range* Built in wine rack* Integrated open shelving island* Soft close drawers* Under cabinet lighting* Bathrooms Ceramic tile flooring* Rain shower heads* Soft close drawers*



COMMUNITY/APARTMENT AMENITIES

- Air Conditioning
- Covered Parking
- Dishwasher
- Fitness Center
- Garage Parking
- High-speed Internet access
- Large closets/storage
- Outdoor Pool
- Pet Friendly
- Washer/Dryer in-suite

LEARN MORE ON OUR WEBSITE

<https://www.vipcorporatehousing.com/properties/citizenpark.html>