

## MITCHELL PARK PLAZA

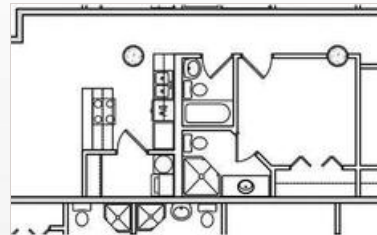
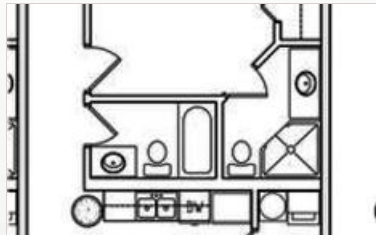
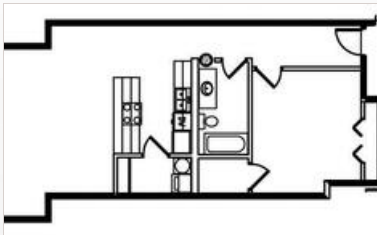
1300 South 11th Street  
St. Joseph, MO 64503 | 1-888-249-5719



Live in this Unique Historic Building in St. Joseph, MO. Large loft-styled floor plans with polished concrete floors, stainless or black appliances, large windows, & washer/dryer included. The building is smoke free, and controlled access. Our community offers an amazing indoor pool, playground, fitness center, and walking trail and are pet friendly with an onsite pet park.



### FLOORPLANS



### COMMUNITY/APARTMENT AMENITIES

- Air Conditioning
- Alarm System
- Business Center
- Covered Parking
- Dishwasher
- Washer/Dryer in-suite
- Fitness Center
- Garage Parking
- Gated Community
- High-speed Internet access
- Indoor Pool
- Large closets/storage
- Laundry facility on premises
- Patio or Balcony
- Pet Friendly
- Playground

### LEARN MORE ON OUR WEBSITE

<https://www.vipcorporatehousing.com/properties/mitchell-park-plaza.html>

