

ELLIPSE ON EXCELSIOR

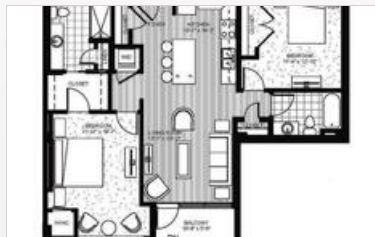
3920 Excelsior Blvd
St. Louis Park, MN 55416 | 1-888-249-5719



Offering completely updated community spaces. The ultimate urban oasis, Ellipse on Excelsior features immaculate residences and resident spaces that put entertainment, sweeping views and convenience at your doorstep. Feel transported to a boutique hotel thanks to amenities such as a heated parking garage, lobbies with Wi-Fi and posh seating areas and a first-floor plaza with an on-site restaurant and retailers. Each building includes a terraced rooftop deck. You also gain access to a conference room, picnic areas with an adjoining public park and state-of-the-art fitness facilities.



FLOORPLANS



COMMUNITY/APARTMENT AMENITIES

- Air Conditioning
- Business Center
- Dishwasher
- Fitness Center
- Garage Parking
- High-speed Internet access
- Large closets/storage
- Patio or Balcony
- Pet Friendly
- Washer/Dryer in-suite

LEARN MORE ON OUR WEBSITE

<https://www.vipcorporatehousing.com/properties/ellipse-on-excelsior.html>