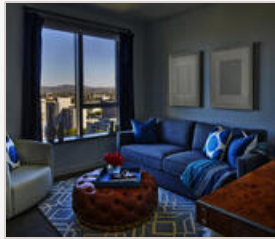
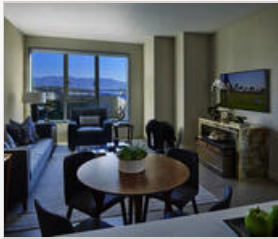


## THE EMERSON

225 South Grand Avenue  
Los Angeles, CA 90012 | 1-855-782-9847



Located in the heart of Downtown Los Angeles at 225 S. Grand Avenue, The Emerson offers luxury apartments near The Broad, Disney Concert Hall, MOCA and the Financial District. Residents have access to best-in-class services with a 24/7 attended lobby and superior amenities that include an outdoor pool and Jacuzzi, penthouse lounge and terrace with BBQ grills, expansive fitness center, dog run and a library that offers work-from-home conveniences like high-speed Internet, desktop computers and printers.



### COMMUNITY/APARTMENT AMENITIES

- Air Conditioning
- Business Center
- Covered Parking
- Dishwasher
- Fitness Center
- Garage Parking
- High-speed Internet access
- Large closets/storage
- Outdoor Pool
- Patio or Balcony
- Pet Friendly
- Washer/Dryer in-suite

### LEARN MORE ON OUR WEBSITE

<https://www.vipcorporatehousing.com/properties/theemerson.html>

[www.vipcorporatehousing.com](https://www.vipcorporatehousing.com)