

BARLEIGH PARK

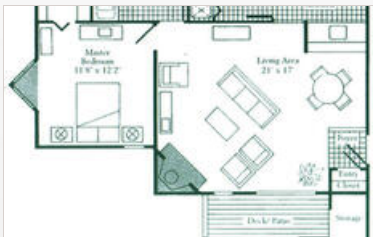
401 Park Ridge Lane
Winston Salem, NC 27104 | 1-855-782-9847



Briarleigh Park truly fits the lifestyle you have earned. Select your home for our various floor plans, each one meeting the highest modern design standards with finishes reminiscent of a custom home. Briarleigh Park is conveniently situated just off prestigious Country Club Road, just minutes away from fine dining and shopping venues, along with major employment bases and interstate I-40 and 421. At a Blue Ridge community, not only do we build and manage beautiful apartment homes...we Enhance People's Lives. Our elite team of associates does this each and every day by providing customer service that is truly unsurpassed. Every time you come home you should feel like you've arrived. At Briarleigh Park...You Will!



FLOORPLANS



COMMUNITY/APARTMENT AMENITIES

- Air Conditioning
- Dishwasher
- Fitness Center
- High-speed Internet access
- Large closets/storage
- Outdoor Pool
- Patio or Balcony
- Pet Friendly
- Playground
- Washer/Dryer in-suite

LEARN MORE ON OUR WEBSITE

<https://www.vipcorporatehousing.com/properties/barleigh-park.html>