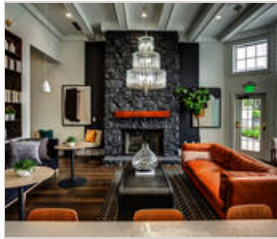


## ASCEND ST. CHARLES

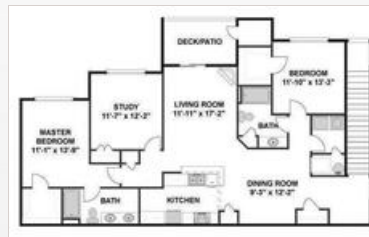
100 Lakeside Drive  
St. Charles, IL 60174 | 1-855-782-9847



Located in the heart of St. Charles, IL we offer stunning river views, striking architecture and a relaxing neighborhood ambiance to create a small-town aesthetic. From a historic downtown dotted with tree-lined bars and restaurants to a wealth of natural parks and the Fox River, this charming haven truly has something for everyone. Here, you will find Ascend St. Charles, a garden-style apartment community spread across twenty-five acres of lush landscaping. Elegant interiors reflect thoughtful craftsmanship, while indulgent amenities promise to relax, pamper and inspire. Nestled in a coveted location only a train ride away from Downtown Chicago, these homes offer the ideal combination of suburban distinction and urban convenience.



### FLOORPLANS



### COMMUNITY/APARTMENT AMENITIES

- Air Conditioning
- Business Center
- Covered Parking
- Dishwasher
- Fitness Center
- Garage Parking
- High-speed Internet access
- Large closets/storage
- Outdoor Pool
- Patio or Balcony
- Pet Friendly
- Washer/Dryer in-suite

### LEARN MORE ON OUR WEBSITE

<https://www.vipcorporatehousing.com/properties/ascend-st-charles.html>