

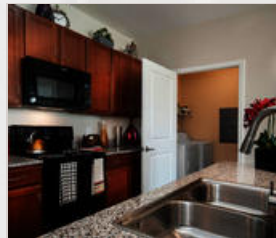
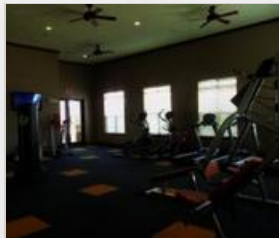
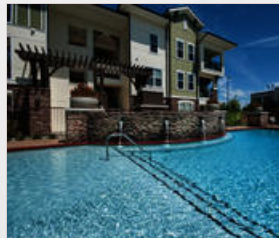


**vip** CORPORATE<sup>®</sup>  
HOUSING

## Hurstbourne Estates

10405 Watermark Pl  
Louisville, KY 40223 | 1-855-782-9847

Living in one of Louisville's most prestigious neighborhoods never felt better! Choose Hurstbourne Estates as your apartment community and live life luxuriously in the heart of Louisville, KY. This brand new community will provide superior resident amenities in an environment that is defined by style, luxury and sophistication. This begins inside your brand new home where you can choose from two different styles - the Big House or e-Urban. Live comfortably with attached garages, full size washer/dryer, granite countertops and custom cabinets. Step outside and enjoy the superior amenity package including a large clubhouse, resort-style pool, fitness center, cyber café and billiards. As part of the Hurstbourne master-planned community, we are conveniently located near the retail and business-filled Hurstbourne Corridor at North



## Community/Apartment Amenities

- Business Center
- Fitness Center
- Garage Parking
- Gated Community
- High-speed Internet access
- Outdoor Pool
- Patio or Balcony
- Pet Friendly
- Washer/Dryer in-suite

[www.vipcorporatehousing.com](http://www.vipcorporatehousing.com)