



vip CORPORATE[®]
HOUSING

Deer Creek

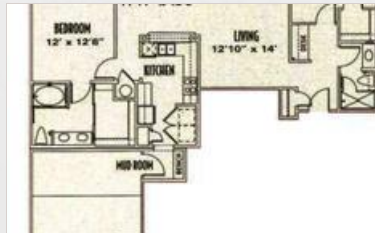
12849 Metcalf Ave
Overland Park, KS 66213 | 1-888-249-5719

Inspired by the Craftsman architecture of the legendary Frank Lloyd Wright and enhanced with unsurpassed technology and convenience, Deer Creek Apartment Homes offer a maintenance-free lifestyle. Set amid a spectacular master planned development offering apartment and single family homes over 45 acres of beautifully wooded rolling hills with a meandering creek and walking path, Deer Creek Apartment Homes affords your privacy and a relaxed atmosphere where you can find life's beauty in the details.

<http://www.vipcorporatehousing.com/properties/deer-creek.html>



Floorplans



Community/Apartment Amenities

- Air Conditioning
- Business Center
- Dishwasher
- Fitness Center
- Gated Community
- High-speed Internet access
- Large closets/storage
- Outdoor Pool
- Patio or Balcony
- Washer/Dryer in-suite

www.vipcorporatehousing.com